

INTRODUCTION

TeamRads.com is the Johns Hopkins School of Medicine Horizontal Strand in Diagnostic Imaging educational website. As part of your gross anatomy course, we have developed teaching modules and cases to complement class lecture materials. We hope the following instructions will serve as an introduction to the resources that this site offers.

GETTING STARTED

To start, click on the anatomy section in the main menu (arrowhead).

Main Menu

- Home
- Anatomy**
- Neuroanatomy
- MIRC Image Bank
- PRECEDE Modules
- Transition to the Wards
- Radiology Elective
- Residents: Joint Procedures
- Apps of Steel
- Other Resources
- About Baltimore
- Contact Us

→

Main Menu

- Home
- Anatomy**
 - Thorax
 - Abdomen
 - Pelvis
 - Limbs
 - Spine
 - Head and Neck
 - 3D Anatomy
 - Anatomy TV
- Neuroanatomy
- MIRC Image Bank
- PRECEDE Modules

The main subsections contain **radiology teaching modules** that are divided by anatomic region:

- Thorax
- Abdomen
- Pelvis
- Limbs
- Spine
- Head and Neck

There are also two resources for **3D anatomic modules**:

- 3D Anatomy
- Anatomy TV

NAVIGATION OPTIONS

Main Menu

- Home
- Anatomy**
 - Thorax
 - Abdomen
 - Pelvis
 - Limbs
 - Spine
 - Head and Neck
 - 3D Anatomy
 - ▶ Thorax
 - ▶ Abdomen
 - ▶ Pelvis
 - ▶ Limbs
 - ▶ Spine
 - ▶ Head and Neck
 - ▶ Quizzes
 - Anatomy TV
- Neuroanatomy
- MIRC Image Bank
- PRECEDE Modules
- Transition to the Wards
- Radiology Elective
- Residents: Joint Procedures
- Apps of Steel
- Other Resources
- About Baltimore
- Contact Us

ANATOMY COURSE LINKS

Radiology Modules

Thorax


Abdomen

Pelvis

Limbs

Spine

Head & Neck



3D Anatomy Modules

Thorax

Abdomen

Pelvis

Limbs

Spine

Head & Neck



AnatomyTV 3D Anatomy

Thorax

Abdomen

Pelvis

Limbs

Spine

Shoulder



In addition to the **main menu** at left, you can navigate to your section of interest via the **thumbnail links** that you will see when you click on “**Anatomy**” in the main menu.

Specific instructions on using each section are listed on the site and an introduction is provided on the following pages.

RADIOLOGY MODULES

If you click on any of the anatomic regions in the submenu, you will be taken to teaching modules that illustrate anatomy on radiographic images.

- Home
- Anatomy**
- ▶ Thorax
 - ▶ Anatomy Tutors
 - ▶ Quizzes
- Abdomen
- Pelvis
- Limbs
- Spine
- Head and Neck
- 3D Anatomy
- Anatomy TV
- Neuroanatomy
- MIRC Image Bank
- PRECEDE Modules
- Transition to the Wards
- Radiology Elective

THORAX INTRODUCTION

Welcome to the thoracic anatomy section of the TeamRads anatomy module. The imaging cases in this section are divided into two parts: tutors and quizzes.

Tutors Labeled cross sectional images made with StudentPACS and MIRC

Quizzes Designed to teach anatomy in the context of abnormal findings

Abbreviations: AP (antero-posterior), PA (postero-anterior), CT (computed tomography), CTA (computed tomography angiogram), MR (magnetic resonance), MRA (magnetic resonance angiogram)

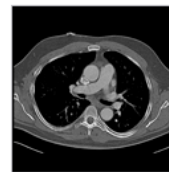
Thoracic CT (axial)



Click on the image

Description: Guide to thoracic anatomy on axial chest CT images.

General Thorax Quiz (CT)



Click on the image

Description: Click on major thoracic organs on this axial CT and answer corresponding questions.

There are two types of modules that you will work with: 1) **StudentPACS** and 2) **MIRC**

Viewing 29/37

Finding: 1
Question: 1/1
LEFT VENTRICLE

The left ventricle is a thick-walled region that receives blood from the left atrium. It pumps blood through the aortic valve into the aorta.

A. Enter Answers here

Submit

StudentPACS Features

You can scroll through these image sets like actual radiographic images that you encounter in your rotations. You can pan and zoom using the buttons on the top right (arrowheads). For anatomy tutors, you will be able to click on anatomic structures to give you the name of the structure. For quizzes, you will be asked to locate a structure and answer a corresponding question.

Document Study **Labeled Study** Legend

Labeled Stud

Document Study Labeled Study **Legend**

LEGEND

1. Spinous process of T2
2. Trachea
3. Clavicle (L)
4. Spine of scapula (L)
5. Humerus (L)
6. Fifth rib - posterior (L)
7. Manubrium
8. Aortic arch
9. Right main bronchus
10. Pulmonary artery (R)
11. Main pulmonary artery
12. Pulmonary artery (L)
13. Lateral margin of descending aorta
14. Lateral surface of right atrium
15. Lateral surface of left ventricle
16. Eleventh rib - posterior (L)
17. Left hemidiaphragm
18. Acromion of scapula (L)
19. Right hemidiaphragm

MIRC Features

Most of these modules contain one or two images. For tutors, first click on the "labeled structures" tab at the top left. Once you want to show the answers, click on "legend". Quiz modules contain multiple choice questions

3D ANATOMY MODULES

Another section that contains anatomy tutorials and quizzes is the 3D Anatomy section. Here you will find 3D anatomy models that you can manipulate via rotation, zooming in and out, etc. For each section, you find the 3D module on the left with corresponding quizzes on the right.

Main Menu

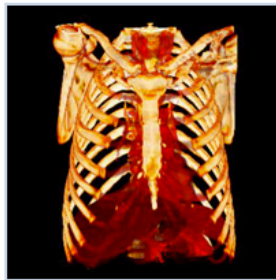
- Home
- Anatomy
 - Thorax
 - Abdomen
 - Pelvis
 - Limbs
 - Spine
 - Head and Neck
 - 3D Anatomy**
 - ▶ Thorax
 - ▶ Abdomen
 - ▶ Pelvis
 - ▶ Limbs
 - ▶ Spine
 - ▶ Head and Neck
 - ▶ Quizzes
 - Anatomy TV
 - Neuroanatomy
 - MIRC Image Bank
 - PRECEDE Modules
 - Transition to the Wards
 - Radiology Elective

3D THORAX INTRODUCTION

This section contains 3D modules that demonstrate thoracic anatomy. The modules are up to 60mb in size so it is recommended that you download the modules to run them. To do this, please right click on the image and choose "save link as". You will need QuickTime Player 7 to run the modules if your computer does not automatically prompt you. Alternatively, you can run the modules directly from your browser, but you will have to wait for them to load completely, which can take several minutes depending on your internet connection, before you will be able to rotate the models and access the quizzes.

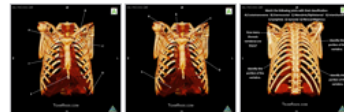
Basic Thorax Module

Right click image and choose "save link as"



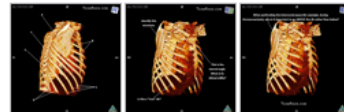
Basic Thorax Quizzes

Quiz 1 Quiz 2 Quiz 3

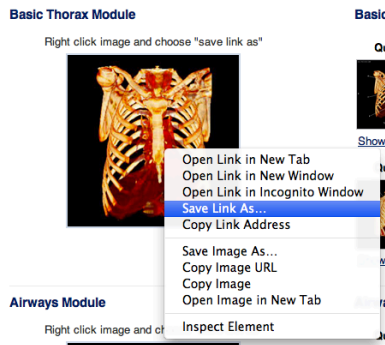


[Show answer](#) [Show answer](#) [Show answer](#)

Quiz 4 Quiz 5 Quiz 6



[Show answer](#) [Show answer](#) [Show answer](#)



Downloading Modules

Because of the large file size of the modules, we recommend that you download them onto your computer. To do this, right click over the image and choose "save link as". You will need **QuickTime 7** to run the files. If your computer does not direct you to the download, just go to the Apple site and search for the software.



Manipulating the Modules

Detailed Instructions are posted on the site if you click on **3D Anatomy**:

http://teamrads.com/index.php?option=com_content&view=category&layout=blog&id=81&Itemid=103

You can turn the module by clicking the image and moving you mouse while holding the mouse button down. Click on the hotspot button (arrowhead) and you will notice circles on the module as you turn it. Click on any of these and you will be taken to the quiz. The quizzes can also be accessed directly from the site, outside of the module.